

CHALLENGER

385 / 65R22.5

GTH2

ALL STEEL RADIAL

2224 2224





max 20 10 1.6
Standard minimum depth: 1.8mm
min 79 10 0
max 4 3





mm 20 10 0 1.6 Standard minimum depth: 1.6mm
mm 20 10 0
min 4 3 0
Recommendations:
Summer tyre 3mm
Winter tyre 4mm





Standard system
depth: 1/8"
1.5
20 10 0
mm
75 10 0
inch
3
Kern
Kern
Kern



IT

P111

385/65R 22.5

P111

Pirelli



mm 20 10 1.6 0
Standard minimum depth: 1.6mm
mm 70 10 0
min 4 3





Standard minimum
depth: 1.6mm

1.6

0

10

20
mm

Recommended
Summer tyre: 3mm
Winter tyre: 4mm

0

10

20
mm

min 4 3



385/65R22.5

CHALLENGER

ALL STEEL RADIAL

H208211 2424

White marker



Standard minimum
depth: 1.6mm

Recommended
Summer tyre: 3mm
Winter tyre: 4mm

20 10 0

20 10 0

THERMO KING



SLX 300



ATP
FR





Thermo King

FRC
06-2027

SLX 300



FERROPLAST









SCHMITZ
CARGOBULL

SCHMITZ
CARGOBULL











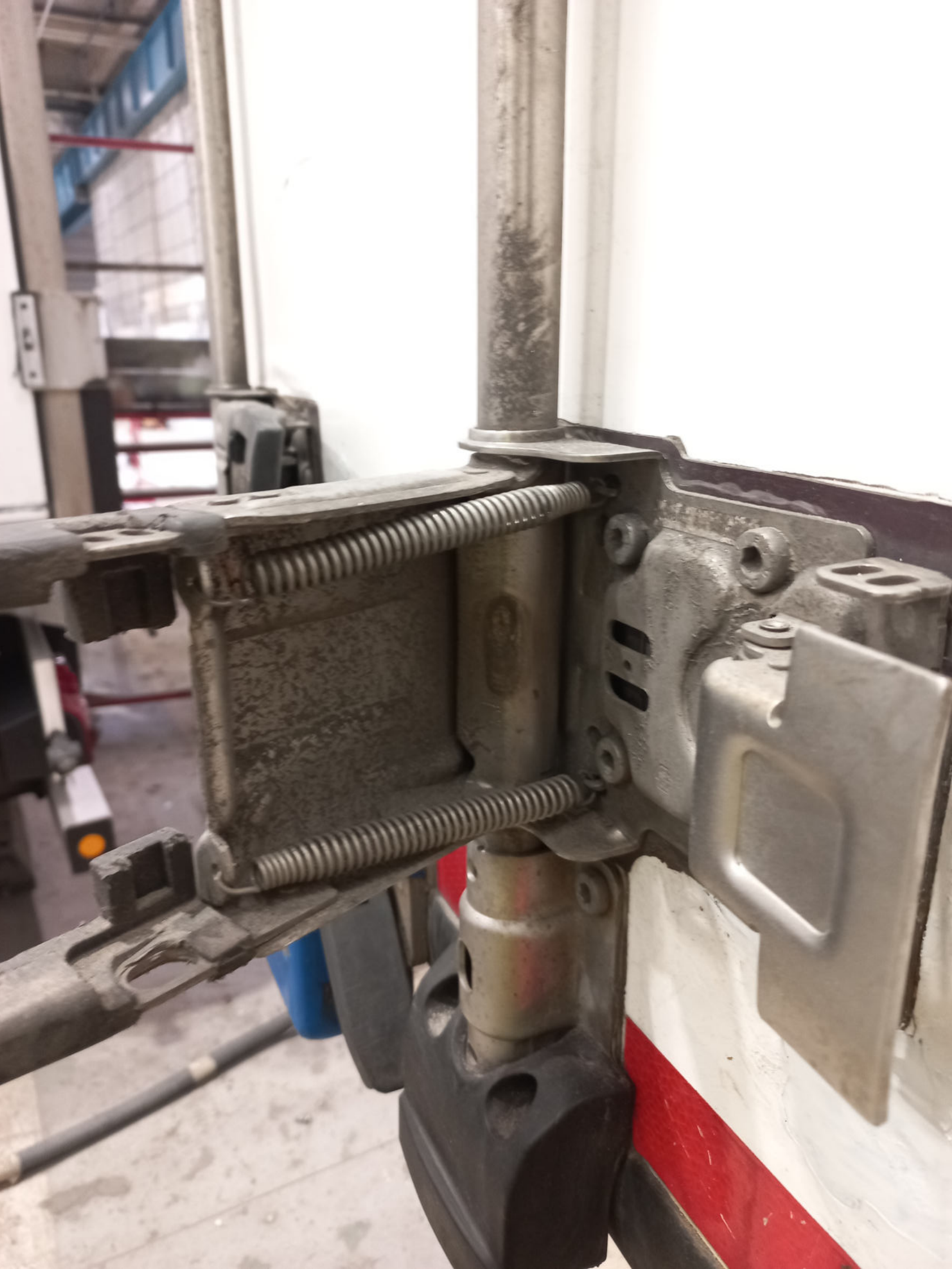
R 6941A





SCHMITZ
CARGO







PL WPR 6941A

SCHMITZ



WARNING
High Voltage
X-ray Radiation
Caution
Do not touch
Do not open
Do not breathe
Do not look
Do not stand
Do not walk
Do not sit
Do not lie
Do not touch
Do not breathe
Do not look
Do not stand
Do not walk
Do not sit
Do not lie









12





PL WPR 6941A

www.cargobull.com

SCHMITZ



SCHMITZ
CARGOBULL

WPR 6941A
SCHMITZ



PL WPR 6941A

www.cargobull.com

SCHMITZ



SCHMITZ
CARGOBULL

WPR 6941A

SCHMITZ

SCHMITZ
CARGOBULL





WELANO SL 1800 K12000
[Red and yellow reflective stripes]
WELANO













FRC
06-2027

THERMO KING



ATP
FRC

FERROPLAST





1B3



THERMO KING




ПРЕДРЕЙС.ТЕСТ ЗАВЕРШ.УСП
ВЫХОД



SmartReefer3



 THERMO KING

ОБЩАЯ НАРАБОТКА (ЧАСЫ)

17

ВЫХОД

СЛЕДУЮЩИИ



SmartReefer 3